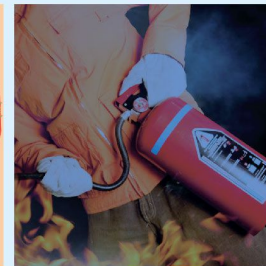
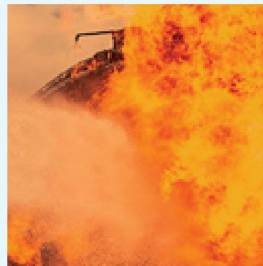
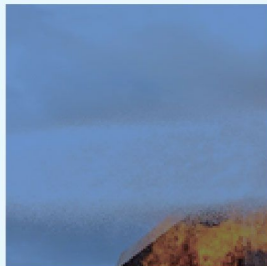


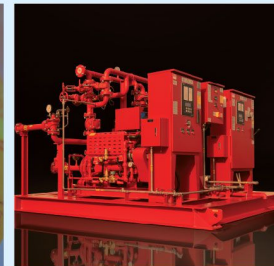
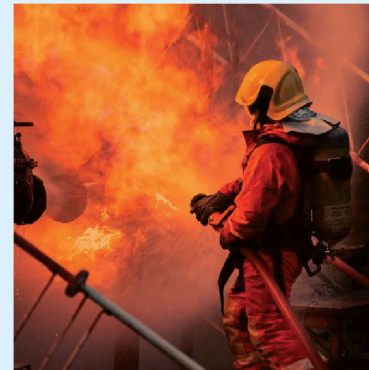
- INDUSTRIAL
- COMMERCIAL
- RESIDENTIAL



GREEN MOUNTAIN BD
Protect for life and asset



GREEN MOUNTAIN BD
Protect for life and asset



*Protect For
Life and Asset*

- INDUSTRIAL
- COMMERCIAL
- RESIDENTIAL



Hakim Dorji Market, Shop No. 15, Madani Avenue
(100 Feet Road), Notun Bazar, Vatura, Dhaka-1212



+88 01819-025090
+88 01816-033425



info@greenmountainbd.com
www.greenmountainbd.com

RAIKHIC Design & Printing
0197700055, 02-8900 627



ABOUT THE COMPANY



Green Mountain BD is specialized in the consultancy, design, supply & installation as well as maintenance of complete range of Fire Protection System, Electrical System, MEP Engineering, Building Automation, Security System Industrial Pump & Safety Equipment. It is committed to providing the most comprehensive and reliable Fire Fighting Equipment's Power, HVAC and Security system to protect & secure lives and properties. Our customers are assured of the best from design, manufacturing to delivery, installation and service. Our team members/engineers are professionals and skilled technicians are well experienced in interpreting specifications and requirements of enforcement authorities. With the understanding of those requirements our engineers and technicians with support installation as well as provide product training and efficient maintenance to ensure optimum performance of the systems.

We provides full range of Fire Protection, electrical, mechanical & security system product those all are imported from International Market to International Standards such as BNBC, Underwrite Laborites (UL), Factory Mutual (FM) British Standard (BS), European Standard (EN) Australian Standard (AS), Singapore Standard (PSB), Malaysian Standards (MS), LPCB, CE, ISO-9002, NFPA.

MISSION STATEMENT

Empowering customer to secure life & property by delivering innovative protection system with electrical solution & knowledge using world class product & service.

VISION

Excel in what we do and build a safe & secure environment for our community. To be the best core engineering solution provider in electrical system & protecting life, environment.

WHY CHOOSE GREEN MOUNTAIN BD

- | | |
|--|---|
| ✓ GENUINE PRODUCT WITH EXCELLENT QUALITY | ✓ DEDICATION & TRANSPARENCY |
| ✓ ON TIME SERVICE DELIVERY | ✓ EXPERIENCED, SPECIALIZED AND HIGHLY SKILLED PERSONNEL |
| ✓ EXCELLENT AFTER SALES SERVICES | ✓ SERVICES COMPATIBLE WITH BNBC, ACCORD ALLIANCE, IBC, BS & EN STANDARD |
| ✓ RICH EXPERIENCE | |
| ✓ RELIABILITY | |



Fire Alarm System (Maple Armor, Canada)



FW2105- Features

- ❑ Up to 9 Signaling Line Circuits and 2268 addressable devices/points
- ❑ Up to 12 Notification Appliance Circuits
- ❑ 4 form C dry relay contacts
- ❑ 8 Isolated SLC circuits
- ❑ A 7" color LCD with 800x480 resolution
- ❑ 12 LED indicators, 6 auxiliary function keys
- ❑ 1000 + 5000 events historical log
- ❑ Single-phase earth fault detection
- ❑ Manual alarm function
- ❑ PAS(Positive Alarm Sequence)function
- ❑ Two-Stage alarm function
- ❑ Silent inhibit function, 0-20 min available
- ❑ Trouble/Supervisory Resound

FW2107- Features

- ❑ 1 Signaling Line Circuits and 252 addressable devices/points
- ❑ Up to 2 Notification Appliance Circuits
- ❑ 3 form C dry relay contacts
- ❑ 16 built in annunciator zones
- ❑ Up to 2 releasing zone
- ❑ A 2.8" True color LCD
- ❑ Up to 16 zone LED annunciator

Fire Alarm System (Simplex, USA)



Control Panel



Pull Station



Sounder Beacon



Module



Smoke Detector



Multi Detector



Heat Detector

Simplex



Features

- ❑ Scalability allows you to accommodate growth from 250 to 1,000 points
- ❑ IP networking offers speed and flexibility at every stage
- ❑ The 4010ES delivers all the benefits of addressability with TrueAlarm addressable sensors and TrueAlert ES notification appliance
- ❑ A perfect, addressable solution for large buildings campuses and applications requiring voice evacuation
- ❑ High-speed, IP-based networking supports advanced data voice, and firefighter telephone communication
- ❑ Forward/backward compatibility protects your investment and makes it easy to keep current with the latest Technology
- ❑ Up to 250 device per loop



AW. ASENWARE



Conventional Fire Alarm System (AW-CFP 2166)



FEATURES

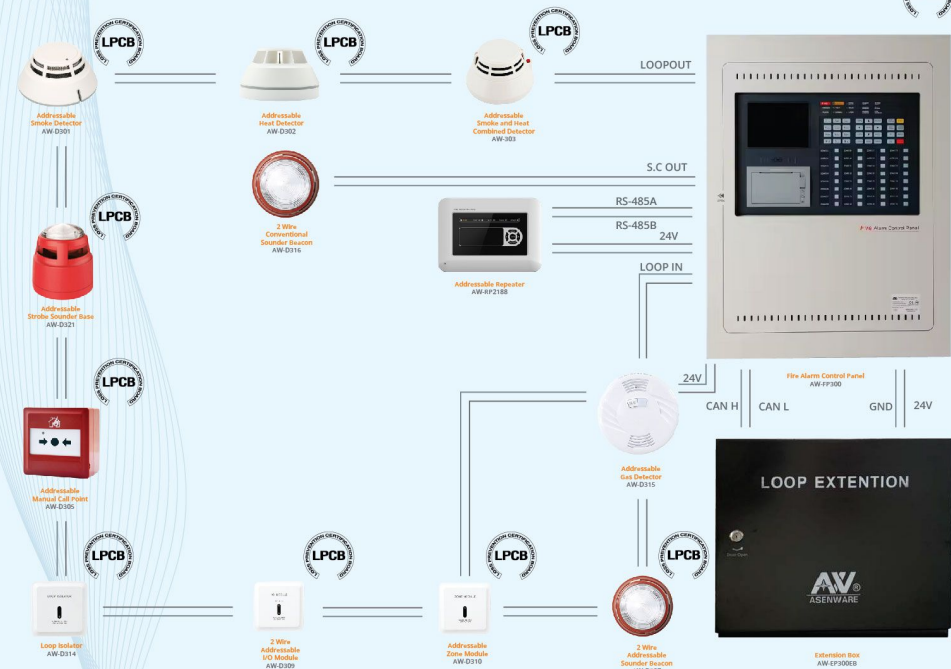
AW-CFP2166 series conventional fire alarm panel is designed based on EN54 part 2&4 standard

It is modularized design, the panel can expand from 1 zone to 32 zones easily

It has 2 levels control mode by a lock

It has an optional GSM module for fire alarm by SMS

Addressable Fire Alarm Control System



FP300- Features

- Up to 324 addresses in one loop, 648 addresses in two loops.
- Easy to read, 4.3" color screen LCD with a resolution of 480X272.
- Zone indication and control panel (ZCP) for 32 zones gives a quick indication of the location of an alarm or fault.
- Record capacity of 1000 historical events for each of historical fire, historical fault and historical operation.
- CAN bus for interconnection of up to 20 FACP's and RS-485 for connection with up to 30 fire indicating panels per FACP.



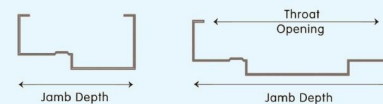
Three Hour Rated Fire Door (Asico, China)

Steel Fire Door Frame

We provide approved fire rated frames and the standard frames as well as drywall frames have been tested in accordance with UL10B, UL10C and UBC 7-2 and listed by Underwriters Laboratories (UL). Frames are labeled 3 hours UL marks UL marks for identification.

The labeled frames can be furnished K.D. (knocked down) or set up (welded) with various loose ("T" Masonry wire masonry, existing wall or UNA twist in stud) anchors. All frame will be prepared for door silencers and fire smoke seals (intumescent) as specification.

All UL certified hardware will be located ready drilling and tapping at our manufacture's standard location as shown on door and frame elevation unless specifically advised.



Single Rabbet

Double Rabbet

05 | ASICO DOOR

All UL certified hardware included

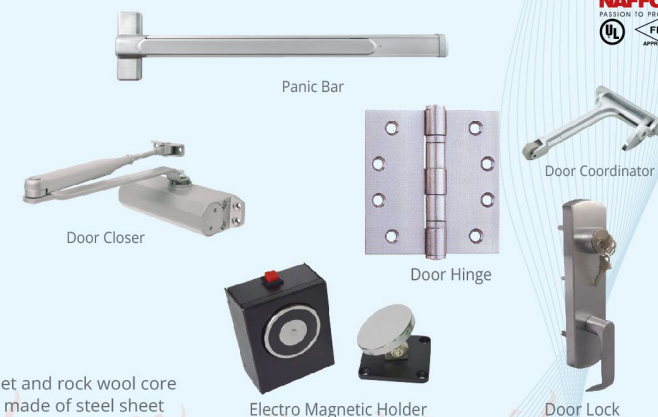


Marks: Door coordinator/Flush bolt is available for double doors

Fire Rated Door (Naffco, UAE)



Fire door



Features

- UL listed and Certified
- Fire rated up to 180 minute
- Door leaf is made of steel sheet and rock wool core
- Door frame single rebate and made of steel sheet
- Door size is customizable
- Door closes automatically





OS & Y Gate Valve



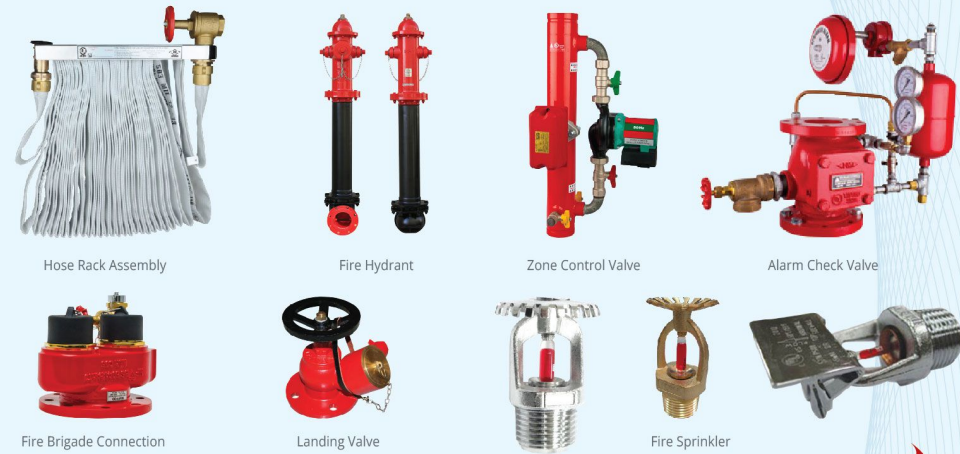
Non Return & Y Stainer



Fire Extinguisher



Fire Hydrant & Sprinkler System (Naffco & Bristol, UAE)



Fire Pump (Naffco, UAE)



Fire Pump (Bristol & Firex, UAE)





soloarti

NINGBO HAISHU TIANYU CABLES & WIRE CO.,LTD.

Fire Alarm Cable

DESCRIPTION

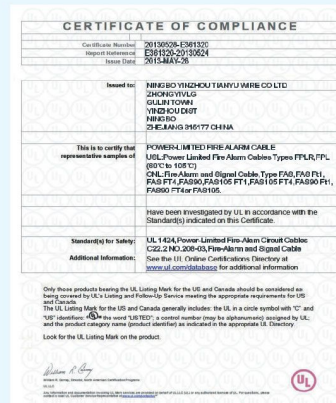
- 1.Solid or stranded, tinned or bare copper conductor
- 2.Fire resistant PVC insulation and jacket
- 3.Fiberglass tape, AL foil, Pet foil, or no
- 4.UL certification is to certify that representative sample of Power

Limited fire alarm cable.

USL: Power Limited Fire Alarm Cables Types FPLR, FPL (60°C to 105°C).

CNL: Fire Alarm and Signal Cable, Type FAS, FAS FT1, FAS FT4, FAS90, FAS105 Ft1, FAS105 FT4, FAS90 FT1, FAS90 FT4 or FAS105

5. Standard for safety: UL 1424, Power-Limited Fire-Alarm Circuit Cables C22.2 NO. 208-03, Fire-Alarm and Signal Cable



Fire Alarm Cable



Description:

Widely used in Various alarm systems, fire protection systems, anti-theft systems smoke and dust control systems, and other communication systems.

Feature:

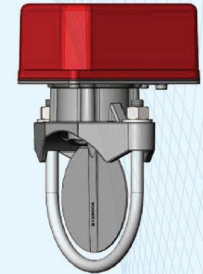
1. High-purity oxygen-free copper, stable transmission, low loss, excellent fire resistance, and safety use.
2. The product has passed UL1424 certification and is of high quality.



Engineering Specifications

The WFAIR water flow detectors shall be installed on system piping as designated on the drawing and/or as specified herein. Water flow detectors shall mount on any clear pipe span of the appropriate normal size, either a horizontal or vertical pipe. The detectors shall have a sensitivity in the range of 4-10 gallons per minute and a static pressure rating up to 450psi for 2"-8" (50mm thru 200mm) pipes. The detector shall respond to water flow in the specified direction after a preset time delay that is field adjustable. The retard structure shall be a sealed mechanical pneumatic unit with visual time delay adjustment.

Note: Cover material is Aluminum, alternative Plastic Cover.



Features & Specifications

Working Pressure	Max3.1Mpa (450psi)	Operating Temperature	4.5°C to 49°C (40° F to 120°F)
Sensitivity	15.0-37.5L/min (4-10GPM)	Maximum Surge	5.5m/s (18FPS)
Contact Rating	Two sets of SPDT (Form C) 10.1A@125/250VAC 2A@24VDC	Retard Structure	Time delay adjustment via rotate dial
		Two sets Micro-switch	100% synchronization
Enclosure Rating	NEMA 4- suitable for indoor/outdoor	Tamper Device	Special tamper screws to prevent disassembly
Compatible Pipe	Steel pipe, schedule 10 through 40	Standards	FM1042-2016&UL346

A GUIDE TO THE INSTALLATION, OPERATION AND MAINTENANCE OF FIRESURE FM FLOW METERS IN AUTOMATIC SPRINKLER INSTALLATIONS

INFLUX
Precision. Design. Innovation.



FLANGE WAFER AND GROOVE TYPES



PAVA System



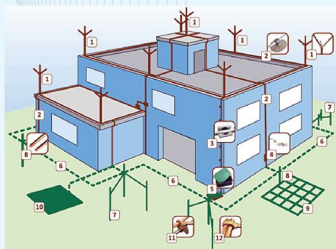
The goal of a PA system is to provide "public address", or a way to transmit audio communication to a group. This transmission can begin with a microphone, which is a device that can assist in magnifying an audio source's volume. A microphone is classified as a device that transforms sound into an electrical signal. Microphones used in PA systems are usually dynamic or condensers. Dynamic microphones are more rugged than condensers and are able to withstand the elements a little better. Condenser microphones utilize their own power source and produce better-quality audio signals, but can sometimes be so sensitive that they also receive background noises.

CCTV System

Turret Technology expert in the design and installation of effective CCTV systems and surveillance cameras. We have been designing CCTV and integrated System for many years. We offer effective tailor made CCTV system for your business from single camera to multiple sites, multiple camera system incorporating hundreds of cameras. We install the very latest in system technology and constantly reviewing and researching new products to make sure that we stay at the forefront of the cutting edge product technology.



Lightning Protection System



The function of a lightning protection system is to protect structures from fire or mechanical destruction and persons in the building from injury or even death. A lightning protection system consists of an external and internal lightning protection system.



OUR SERVICE

Fire Protection & Detection System

- ☐ Fire Fighting Pump Set
- ☐ Standpipe & Hose System
- ☐ Hydrant & Sprinkler Systems
- ☐ Gaseous clean Agent
- ☐ Foam Suppression System
- ☐ Fire Detection System
- ☐ Fire Extinguisher
- ☐ Fire Blanket
- ☐ Fire Rated Door
- ☐ Rolling Shutter
- ☐ Smoke & Fire Curtains

Electrical System

- ☐ Transformer
- ☐ Sub Station
- ☐ HT/LT Panel
- ☐ Switch gear/Control room work
- ☐ Generator

Our Brand Partner



- Consultancy
- Fire Safety Plan
- Building Management System (BMS)
- Surveillance System (CCTV)
- Access Control & Time Attendance System
- Industrial Pump and Accessories
- Safety Equipment

